

Attix5 Pro backup and recovery for desktops, laptops and servers

Enable automatic backups and anywhere, anytime recovery with Attix5 Pro; the .NET generation of Attix5 Backup Professional. With disk-to-disk solutions available for Windows, Mac and Linux operating systems; Attix5 Pro provides private and business users with cutting-edge, simple, reliable and secure data protection. Using an Attix5 Pro solution, you can back up critical data from workstations and servers, across physical and virtual platforms, to a secure off-site or local data centre, while giving backup administrators full control of all processes via a single console.

Automatic backup scheduling eliminates risk

With Attix5 Pro Backup Clients, up-to-the-minute backup schedules enable automatic and regular backups without user intervention, eliminating the highest risk posed to the backup process — human error.

Intelligent file inclusion and exclusion

Control which files and folders are backed up and restored using a range of Attix5 Pro selection tools. These include filters and profiling features that enable administrators to enforce backup selections. Controlled backup selection facilitates rapid, transparent backups, even over low-speed connections.

Fully scalable, Attix5 Pro grows with your business

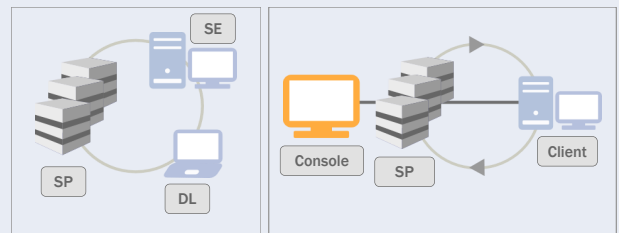
Attix5 Pro's flexible architecture provides you with multiple deployment options and caters for multiple workstation specifications and operating systems, enabling the solution to grow with your business or personal network environment.

Anywhere, anytime recovery

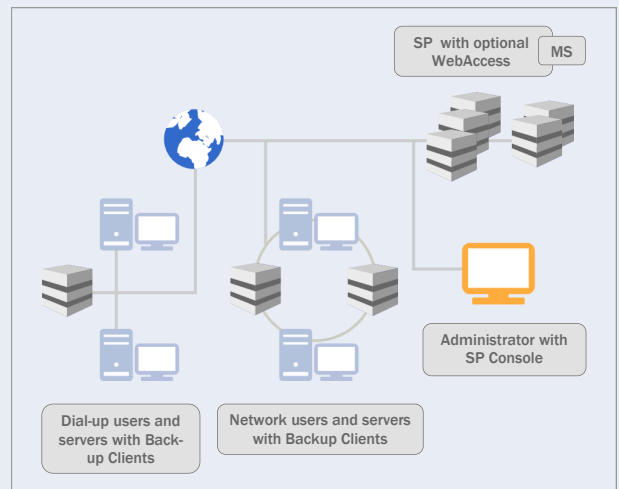
Recover critical data in seconds from the user's workstation or remotely. Clients can select data to restore and data to exclude from the restore process, and then initiate recovery themselves, without the need for technical assistance.

HOW IT WORKS

Files and folders stored on desktop PCs, laptop computers or servers running Attix5 Pro Desktop & Laptop Edition (DL) or Server Edition (SE) can be backed up to a Storage Platform (SP). In the event of data loss or corruption, you can retrieve data from the Storage Platform and restore it to the original or another computer in just a few easy steps.



Attix5 Pro scales seamlessly to accommodate anything from one to thousands of workstations and servers; protecting data across physical platforms, virtual environments and geographic locations and enabling central management via a single console. The possible network scenarios are endless but the flexibility of these component-based solutions makes full protection of all your digital data not only possible but efficient.



ATTIX5 PRO DATA PROTECTION. SIMPLE. RELIABLE. SECURE.

KEY FEATURES

- **Automatic backup scheduling**
Eliminate the risk of human error by automating the entire backup process using Attix5 Pro's up-to-the-minute backup scheduling feature.
- **Scalable and flexible**
One to thousands of workstations and/or servers running different operating systems can be backed up to a central off-site or local data centre (Storage Platform) and managed via a single console.
- **Data de-duplication**
Duplicate files are eliminated on the fly across all Backup Accounts, saving bandwidth and storage space.

- **Intelligent file selection**
Use filters, profiling and file-level inclusion and exclusion to specify data to back up/restore and data to ignore.
- **Central administration**
A single management console enables backup administrators to control backup and restore processes and configure all Backup Clients remotely.
- **Client user self-restores**
Backup Client users can restore data directly to their workstations, without the need for technical support.
- **Streaming Backup**
SE users have access to Streaming Backup, which is extremely fast and uses very little disk space.

Attix5 Pro feature highlights

Backup options	DL	SE
Dynamic and manual data selection	✓	✓
Off-site storage support	✓	✓
Once-off daily and advanced backup schedules	✓	✓
Pre-backup compression/patching	✓	✓
Backup throttle	✓	✓
Snapshot backups and restores	✓	✓
Command-line interface (CLI) control	✓	✓
Microsoft Volume Shadow Copy Service (VSS) support (open file backups)*	✓	✓
Backup Client Over Limit notifications	✓	✓
Client advertising banner	✓	
Multiple Backup Sets (including separate data selections and schedules)		✓
NTFS Change Journal support*		✓
Delta Blocking		✓
Streaming Backup		✓

* Only available in Windows versions

Restore options	DL	SE
Full backup set or selective data recovery	✓	✓
File search — available locally and remotely	✓	✓
Alternative destination restore	✓	✓
Recreate directory structure	✓	✓
Overwrite files	✓	✓
File and folder permission restore		✓
Faster target location restores		✓

Storage, speed and bandwidth optimisation	DL	SE
Source and target-based data de-duplication	✓	✓
Data compression (in transit and storage)	✓	✓
Backup resumes	✓	✓
Run backups in background*	✓	✓

* Only available for Windows 7, Vista and Windows Server 2008 operating systems

Other
Central administration
Client installation customisation and settings lock down
Network detection
Nested Backup Groups and Collections with multi-tier access control and permissions
Account limit and overspill control
Account expiry control and notifications
Automatic Backup Client upgrades
Dynamic Profiling
Remote Management
Month-end backup retention control
Retries and timeouts
Reports (Standard, Enterprise and customisable)
SSL protocol encrypted network communications
Advanced Encryption Standard (AES)
Backup Client and Web Access user authentication and reporting
Adjustable Backup Client user permissions
Integrity Checks (Stored data validations)
Web Client interface with briefcase and email options

SUPPORTED OPERATING SYSTEMS

Attix5 Pro Desktop & Laptop Edition

- Windows 8
- Windows 7
- Windows Vista
- Windows XP (SP2)
- MAC OS X (10.6–10.8)

Attix5 Pro Server Edition

- Windows Server 2012
- Windows Server 2008 | 2008 R2
- Incl. Small Business Server bundles
- 32/64-bit OS support
- Windows Server 2003
- Incl. Small Business Server bundles
- 32/64-bit OS support
- Red Hat Linux
- openSuSE (10.3, 11.0, 11.1)
- Fedora Core Project (9, 10 & 11)
- Ubuntu 12.04 LTS
- Solaris 10
- MAC OS X (10.6–10.8)

SERVER EDITION PLUG-INS

Microsoft-related

- MS SQL Server 2005 | 2008 | 2012
- MS VSS
(Supports MS Exchange 2003 | 2007 | 2010 and SQL 2005 | 2008 | 2012
[Please note: This plug-in does not support System State. A dedicated System State plug-in is available.]
- System State (Supports Windows Server 2003 | 2008 [incl. R2])
- Exchange Single Item Recovery Plus (Supports MS Exchange Server 2010 SP1 or later)

Additional

- Email Notification
- Script
- VMware ESX via VCB 3.5 | 4.1

CONTACT US

Email: info@attix5.com
Website: www.attix5.com