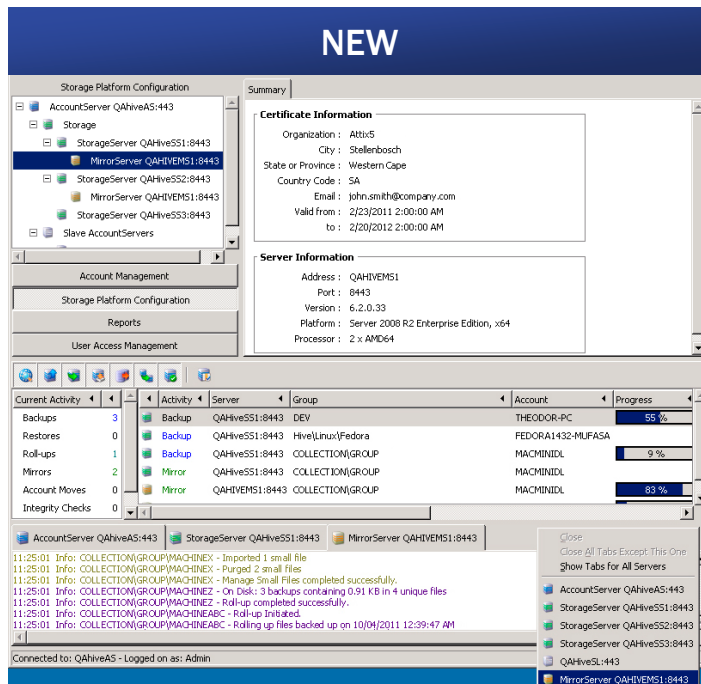


Attix5 Pro V6.2 New Features



SUMMARY

- More robust encryption key handling
- Faster and more robust Mirror transfers
- More detail in Roll-up report
- Higher maximum roll-up retention
- Back up symbolic links with Linux and Unix versions of Attix5 Pro Server Edition
- Optimised Logs tab in Attix5 Pro DL and SE
- Attix5 Pro for Solaris
- Backup Selection reports available with email notifications
- System State plug-in: Consolidation & optimised disk usage for WSB
- MirrorServer progress monitoring in SP Console with standard connection
- VMware Plug-in: vSphere 4.1 support
- Exchange 2010 Single Item Recovery **Plus**

More robust encryption key handling

More robust encryption key handling over multiple StorageServers and MirrorServers.

Faster and more robust Mirror transfers

Mirror protocol redesign to eliminate time-outs and improve transfer speed.

More detail in Roll-up report

The **Roll-upsThisMonth** report now includes the amount of unique data stored with each roll-up (i.e. data not referenced in any other backup or roll-up).

Higher maximum roll-up retention

The maximum roll-up retention on the Storage Platform has been increased to 999 roll-ups.

Back up symbolic links with Linux or Unix versions of Attix5 Pro Server Edition

Attix5 Pro Server Edition running on Linux and Unix operating systems can now back up symbolic links.

VMware Plug-in: vSphere 4.1 support

Attix5 Pro Server Edition now supports VMware's vSphere 4.1.

Optimised Logs tab in Attix5 Pro DL and SE

The **Logs** tab has been optimized to display very large (several Gigabytes) log files instantaneously and with minimal memory usage.

Attix5 Pro for Solaris

The Attix5 Pro Backup Client is now available for Servers running the Solaris 10 operating system.

Backup Selection reports available with email notifications

You now have the option to include an HTML-formatted list of the files and folders selected for backup with email notifications.

System State plug-in

Consolidated: A single System State plug-in for both Windows Server 2003 (using NTBackup) and Windows Server 2008 (using WSB).

Optimised disk usage for WSB: The System State (using WSB) plug-in now supports an **Optimised for disk usage** mode reducing disk usage by between 30% and 50%.

MirrorServer progress monitoring now possible in SP Console with standard SP connection

While connecting directly to MirrorServers was the only way to view MirrorServer activity in the past, you can now connect to a Storage Platform as per usual and monitor MirrorServer progress alongside StorageServer progress as well as cancel tasks.

ATTIX5 PRO
DATA PROTECTION.
SIMPLE. RELIABLE. SECURE.

CONTACT US

Email: info@attix5.com
Website: www.attix5.com

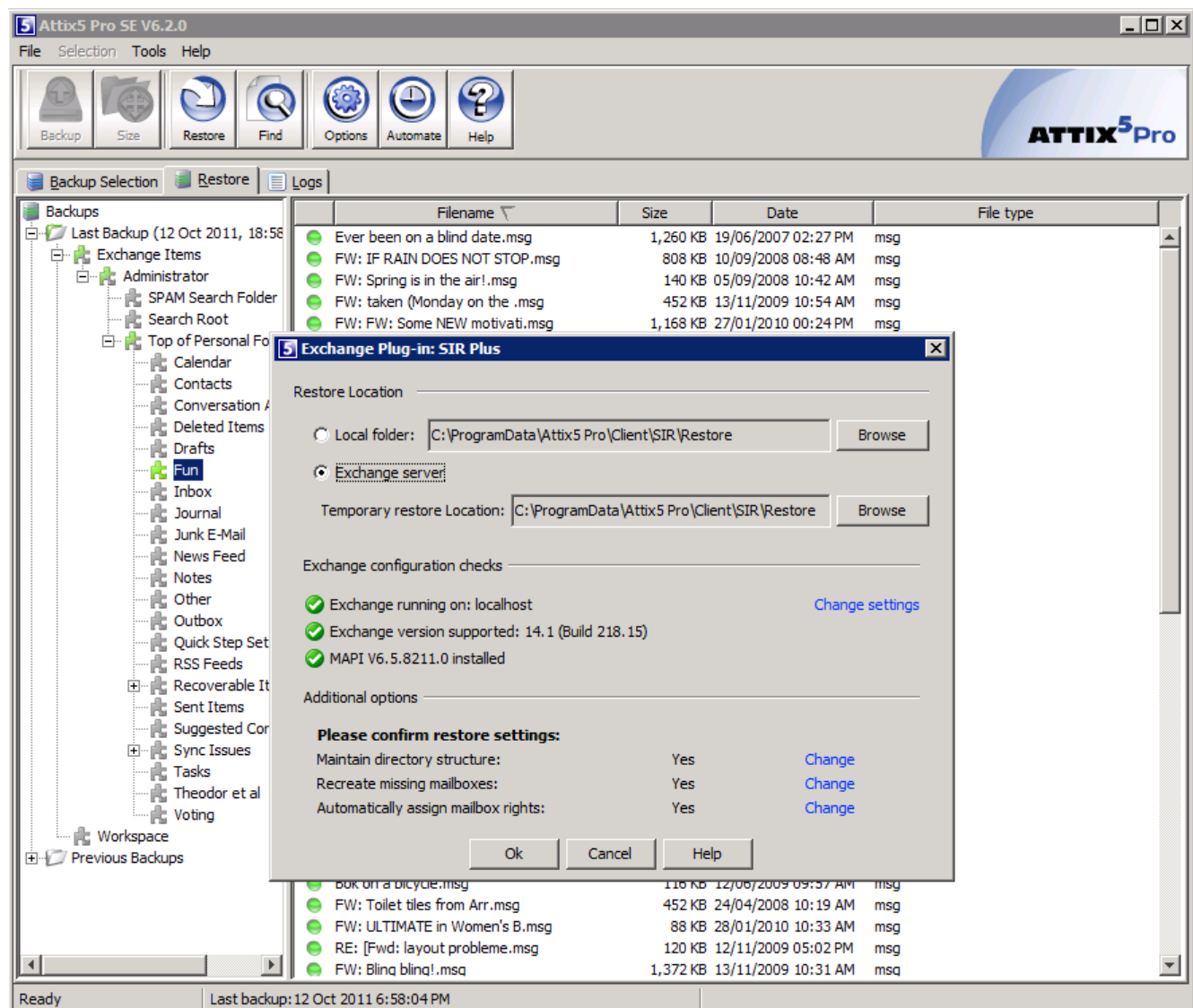
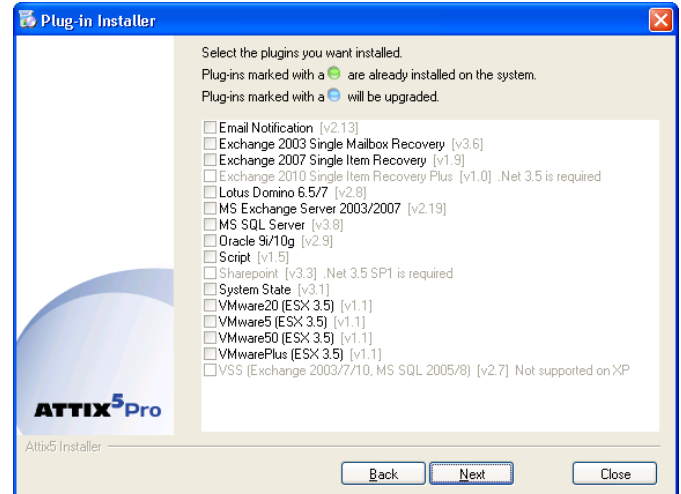
Single Item Recovery Plus – A plug-in for Exchange 2010

Back up and restore individual emails, contacts, tasks and calendar items with the Attix5 Pro Exchange 2010 Single Item Recovery Plus plug-in for Microsoft Exchange Server 2010.

Please note: The standard SIR plug-in only supports Microsoft Exchange 2007. It does not support Microsoft Exchange Server 2010 and no longer supports Microsoft Exchange Server 2003.

A few benefits of Single Item Recovery Plus:

- Significant speed improvements (in comparison to the standard SIR plug-in)
- Automatic installation and configuration checks
- Enhanced user interface
- Ability to restore to .MSG and .ZIP files to the local machine as well as directly to the Microsoft Exchange server
- Option to recreate missing mailboxes during restore



CONTACT US

Email: info@attix5.com
Website: www.attix5.com